



M550

**UV-VIS TRUE DOUBLE
BEAM SCANNING
VARIABLE BANDPASS
SPECTROPHOTOMETER**

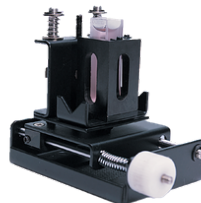
This is a true double beam instrument with parallel sample and reference beams. The specification is as expected from a top-of-the-range instrument designed for research as well as routine use.



The M550 conforms to all current US and European Pharmacopoeia guidelines. It passes the Potassium Chloride stray light test, the Toluene in Hexane resolution test, the Holmium Perchlorate solution wavelength test and the Potassium Dichromate absorbance test.



INTEGRATING SPHERE



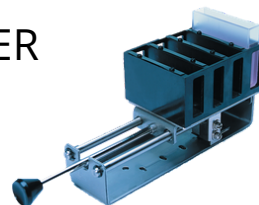
MICRO CELL HOLDER



6 CELL AUTO CHANGER



PELTIER/SIPPER



0-50mm 4 X CELL
MANUAL

**A selection of the many
Cell Compartment
Accessories available**

www.camspec.eu

EMAIL: sales@camspec.eu TEL: +44 (0)113 286 4536



PC Control User Interface

The M550 has a USB output for the transfer of results to a PC and for PC controls of the M550. Comprehensive Camspec Application Software is available, together with small PC programs, dedicated to specialist tasks.

- Operations Include:
- Basic Mode (Abs, %T, Conc)
 - Quantitative
 - Wavelength Scanning
 - Kinetics
 - DNA/Protein
 - Multi-wavelength
 - Performance Validation

Technical Specifications

Display	LED Display
Light sources	Tungsten-Halogen and Deuterium
Monochromator	Littrow type with 1200 lines/mm grating
Scan Speed	Up to 2500 nm/min (return 3000nm/min)
Detector	Silicon Photodiodes
Wavelength Range	190 - 1100nm
Wavelength Accuracy	± 0.3nm
Wavelength Resolution	0.1nm
Wavelength Repeatability	± 0.05nm
Baseline Flatness	± 0.002 (After 1 Hr warm up 1100 – 200nm)
Zero Drift	< 0.001A per hour after warm-up
Noise	± 0.0001A @ 500nm 0A
Bandpass	0.5, 1, 2, 4nm
Stray Light	KCl >2A at 198nm <0.05%T @ 220nm & 340nm
Photometric Accuracy	± 0.5% at 0.5A, 1.0A and 2.0A
Photometric Range	-0.3 to 3A, 0 to 200%T, 0 to 9999 Conc
Printer Interface	Parallel for A4 HP and Epson printers
Computer Interface	USB for PC control plus USB for data export
Power Requirements	110/120V, 220/230V, 50/60 Hz, 110VA
Dimensions	630 x 410 x 280mm packed 770 x 560 x 410
Weight	24kg packed 28Kg

